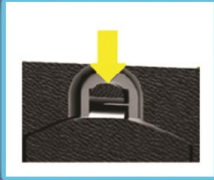


SETUP

Press back on battery cover tab then pull down to open



Insert 9v battery which supports high current electronics

Set the power switch to on and place device before calibration phase

PRO TIP

During calibration, a light tap near the Sizmo will desensitise the alert.

That allows you to set it to only trigger after a significant tap or bang.

SCIRETECH.CO.UK

Discover everything you need on the SCIRE website to access cutting-edge, science based devices



EXCLUSIVE CODE

At checkout enter the single use discount code SCIRETECH

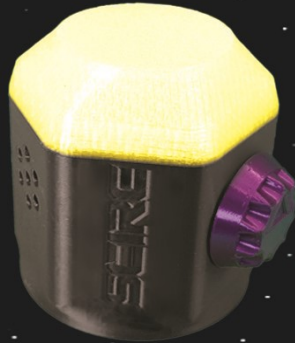
SCIRE
SCIRETECH.CO.UK



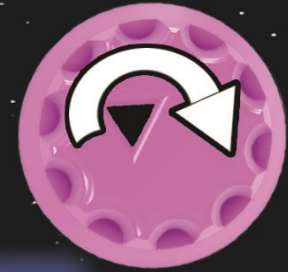
SIZMO II v1.2
contact@sciretech.co.uk

CALIBRATION

The SIZMO II flashes yellow, your cue to place it down before it begins calibrating.



It then holds a steady yellow as it learns the surrounding vibrations. This adjusts sensitivity based on any movement or taps. It is ready and quietly monitoring when the light turns off



KNOCK-O-DIAL

Turning the the Knock-O-Dial to the right puts the Sizmo II into knock counting mode.

It will provide a Green Alert if it detects one knock and a Red Alert if it detects 2 knocks.

ALERTS

The knock-o-dial controls the period the Sizmo II will wait for the second knock.

VIBRATION

When the Knock-O-Dial is turned fully to the left, the Sizmo II will act as a vibration alarm, lighting purple and providing an audible tone. It will only detect a vibration which is stronger than the baseline.



The Knock-O-Dial can be set between 100 milliseconds and 4 seconds and will light up blue to show how long it will wait.



ONE KNOCK



TWO KNOCKS