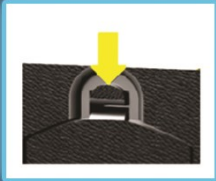


SETUP

Press back on battery cover tab then pull down to open



Insert 9v battery which supports high current electronics

Set the power switch to on and place device before calibration phase

PRO TIP

The sensor is at the opposite end to the power switch, be mindful of pointing it towards drafts

SCIRETECH.CO.UK

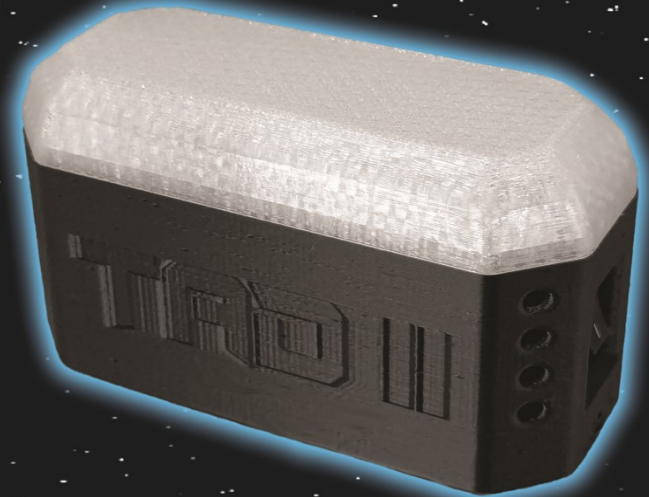
Discover everything you need on the SCIRE website to access cutting-edge, science based devices



EXCLUSIVE CODE

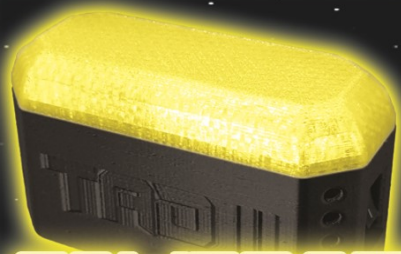
At checkout enter the single use discount code SCIRETECH

SCIRE
SCIRETECH.CO.UK



**THERMAL
ANOMALY
DETECTOR v3.2**

contact@sciretech.co.uk



CALIBRATION

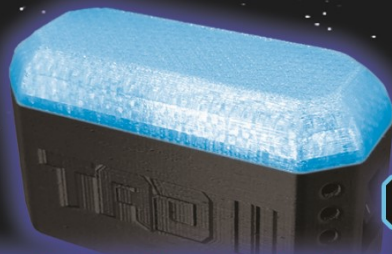
On startup, the device flashes yellow, place it down before calibration begins. Whilst solid yellow it is calibrating to the ambient temperature and natural changes. When finished, the number of beeps indicates the baseline fluctuation level.



MONITORING

When glowing green, the TAD captures 20 readings per second and compares them against the past 300 seconds to detect anomolous temperature changes.

ALERTS



COLD SPOT DETECTED

The TAD has detected a sudden sharp drop in local temperature! Check for a natural reason for this such as a cold draft



HOT SPOT DETECTED

The TAD has detected an increase in temperature which is above the calibrated levels. Check for any sources of heat including people in an enclosed area.