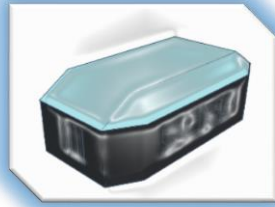


# SCIRE

THERMAL ANOMALY DEVICE V1.1



## SETUP

- To get up and running with the TAD, unscrew the compartment on the side of the device, and insert a 9v battery
- Push the battery cap lead back into the compartment (there is a hole at the back of the compartment for additional wire space)
- Screw the compartment closed, and you are good to go!

## OPERATION

- Switch the switch on the side to the I position to switch on position to switch on
- Place the device where you are interested in checking for temperature anomalies. Avoid windows and doorways which can cause false alarms
- If it detects a sudden drop in temp, it lights up blue, and provides two tones which descend, if the temperature goes up, it lights up red and provide two rising tones

## ADVANCED

- When the device starts, it performs a system check and displays a colour cycle pattern
- It then flashes yellow during a period where it logs temperature 100 times. This calibrates the device to your environment.
- After that point, it measures the temperature every half second, and if this temperature deviates from the average of the past 100 readings by 0.5 degrees, it raises the alarm.
- The normalise function prevents false alarms, when a hot/cold spot is reported, it doesn't alert you to the opposite when the temperature returns back to normal.